



***SIMPLY  
GOOD TRAILERS***

**2024**



**SIMPLY  
GOOD TRAILERS**

**MULTI-OFFER SP. Z O.O.**



We are a rapidly growing company present on the market for several years. Offered a wide range of products from accessories vulcanization by oils and batteries, the steel wheels and aluminum and tires. Thanks to the experience and professionalism can be found in the expectations of customers and to respond appropriately to market changes.

Attention to detail and high quality materials distinguish the **Faro** brand among other manufacturers.  
In this way, we offer our partners and customers with the highest level of service, new products and the stability of the company.



**MULTI-OFFER SP. Z O. O.**

ul. frezerów 9  
20-209 Lublin  
e-mail: [bok@przyczepyfaro.pl](mailto:bok@przyczepyfaro.pl)  
Web-site: [www.przyczepyfaro.pl](http://www.przyczepyfaro.pl)



## TRAILERS 1 AXLES UNBRAKED

**TRACTUS\_\_ 3**  
**TRACTUS MULTI\_\_ 6**  
**TRACTUS FLEX\_\_ 8**  
**PONDUS\_\_ 10**

## TRAILERS 2 AXLES UNBRAKED

**SOLIDUS\_\_ 12**  
**MAGICUS\_\_ 14**

## TRAILERS 2 AXLES BRAKED

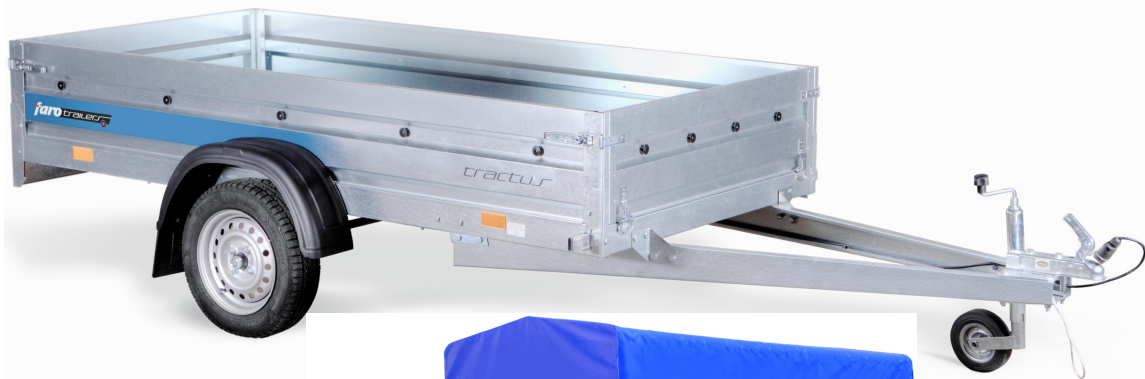
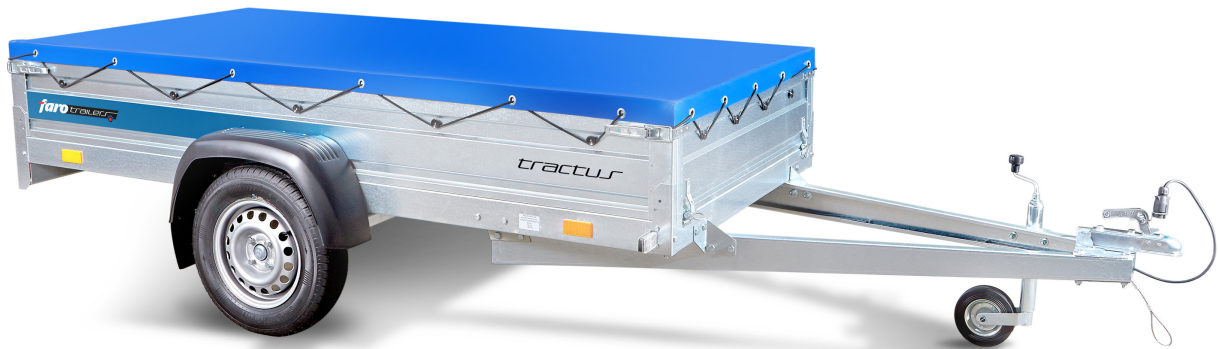
**MAGICUS MAX\_\_ 16**  
**SOLIDUS MAX\_\_ 18**

## WATER TRAILERS

**AQUA\_\_ 20**  
**AQUA TOP\_\_ 22**  
**AQUA FLEX, AQUA TOP FLEX\_\_ 24**

## SPECIAL TRAILERS

**AMICUS\_\_ 26**



**TRACTUS** - is a modern unbraked car trailer. Wheels are placed outside of the trailer. It's made of the best available materials.

Permissible gross weight is 750 kg. The trailer was made of an endurance sheet with a thickness of zinc coat equals 275g/m<sup>2</sup> (A class). Bolted construction of a trailer simplifies element replacement - used during the regular exploitation and riveted and screwed. Strength of construction is provided by a frame made from cold formed stringers. Stringers are U-shaped. Special frame, stringers, and an appropriate number of crossbeams give a right stiffness and stability of the whole construction. Sides of Tractus are easily removable. It can be easily used as a platform. This trailer was made using components of known producers STEELPRESS, KNOTT and AL-KO. EU homologation.

**ADDITIONAL EQUIPMENT:**

- the frame with a cover H-1100mm, H-800 mm
- flat cover
- spare wheel with bracket
- unbraked axle STEELPRESS 1000 kg with compact bearings (especially recommended for trailer rentals)
- mesh sides extension
- full side extensions,
- sides extension

**STANDARD EQUIPMENT:**

- trailer's frame was made from galvanized sheet - thickness 2,5 mm (A class)
- towing hitch V-type was made from a bent galvanized sheet 2,5mm (A class), bolted
- trailer's sides were made of galvanized sheet - thickness 1,5 mm (A class)
- front/rear sides open, full metal or filled with plywood
- side walls removable, full metal or filled with plywood
- towing hitch ball STEELPRESS 750kg or 1300kg made by STEELPRESS
- floor is made of waterproof non-slippery plywood - thickness 9 mm
- unbraked torsional axle STEELPRESS, KNOTT or AL-KO
- mudguards with mudflap are made of polyethylene material
- jockey wheel
- wheels 155/70 R13 or 155/80R13
- load securing buckle
- side rolls helping install the cover
- electrical installation 12V (in accordance with traffic regulations)
- 7 pins plug or 13 pins plug

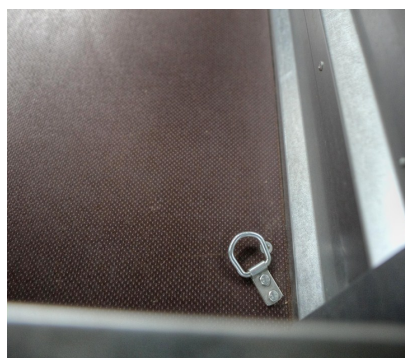


This offer is solemnly for information. Considering constant development of our company the producer keeps the right to changes and technical modifications.

CODE	TYPE	Cargo space dimensions (cm)	Side Type	Side height (cm)	load capacity min. - max. (kg)	External dimensions of the trailer (cm)
10900000	Tractus	160x125	METAL	35	235 - 585	301 x 170
10910000	Tractus+	160x125	PLYWOOD	35	232 - 582	301 x 170
10920000	Tractus	160x125	METAL	45	232 - 582	301 x 170
10940000	Tractus+	160x125	PLYWOOD	45	225 - 575	301 x 170
10900000R	Tractus PLATFORM	160x125	-	-	235 - 585	301 x 170
10800000	Tractus	180x125	METAL	35	230 - 580	321 x 170
10810000	Tractus+	180x125	PLYWOOD	35	225 - 575	321 x 170
10820000A	Tractus	180x125	METAL	45	225 - 575	321 x 170
10840000A	Tractus+	180x125	PLYWOOD	45	220 - 570	321 x 170
10800000R	Tractus PLATFORM	180x125	-	-	235 - 585	321 x 170
10100000	Tractus	205x125	METAL	35	225 - 575	345 x 170
10110000	Tractus+	205x125	PLYWOOD	35	255 - 565	345 x 170
10120000A	Tractus	205x125	METAL	45	220 - 570	345 x 170
10140000A	Tractus+	205x125	PLYWOOD	45	210 - 560	345 x 170
10100000R	Tractus PLATFORM	205x125	-	-	235 - 585	345 x 170
10101000	Tractus	205x140	METAL	35	212 - 562	345 x 185
10111000	Tractus+	205x140	PLYWOOD	35	199 - 549	345 x 185
10121000A	Tractus	205x140	METAL	45	215 - 565	345 x 185
10141000A	Tractus+	205x140	PLYWOOD	45	205 - 555	345 x 185
10101000R	Tractus PLATFORM	205x140	-	-	225 - 575	345 x 185
10200000	Tractus	220x125	METAL	35	220 - 570	360 x 170
10210000	Tractus+	220x125	PLYWOOD	35	205 - 555	360 x 170
10220000A	Tractus	220x125	METAL	45	210 - 560	360 x 170
10240000A	Tractus+	220x125	PLYWOOD	45	200 - 550	360 x 170
10200000R	Tractus PLATFORMA	220x125	-	-	230-580	360 x 170
10201000	Tractus	220x140	METAL	35	198 - 548	360 x 185
10211000	Tractus+	220x140	PLYWOOD	35	188 - 536	360 x 185
10220000A	Tractus	220x140	METAL	45	205 - 555	360 x 185
10241000A	Tractus+	220x140	PLYWOOD	45	195 - 545	360 x 185
10201000R	Tractus PLATFORM	220x140	-	-	215 - 565	360 x 185
10300000	Tractus	236x125	METAL	35	215 - 565	376 x 170
10310000	Tractus+	236x125	PLYWOOD	35	200 - 550	376 x 170
10320000A	Tractus	236x125	METAL	45	205 - 555	376 x 170
10340000A	Tractus+	236x125	PLYWOOD	45	195 - 545	376 x 170
10300000R	Tractus PLATFORM	236x125	-	-	215 - 565	376 x 170
10301000	Tractus	236x140	METAL	35	526 x 540	376 x 185
10311000	Tractus+	236x140	PLYWOOD	35	176 x 526	376 x 185
10321000A	Tractus	236x140	METAL	45	195 - 545	376 x 185
10341000A	Tractus+	236x140	PLYWOOD	45	185 - 535	376 x 185
10301000R	Tractus platforma	236x140	-	-	210 - 560	376 x 185
10501000	Tractus	250x140	METAL	35	195 - 545	381 x 185
10511000	Tractus+	250x140	PLYWOOD	35	165 - 515	381 x 185
10521000A	Tractus	250x140	METAL	45	190 - 540	381 x 185
10541000A	Tractus+	250x140	PLYWOOD	45	155 - 505	381 x 185
10501000R	Tractus PLATFORM	250x140	-	-	205 - 555	381 x 185
10400000	Tractus	263x125	METAL	35	205 - 555	400 x 170
10410000	Tractus+	263x125	PLYWOOD	35	185 - 535	400 x 170
10420000A	Tractus	263x125	METAL	45	195 - 545	400 x 170
10440000A	Tractus+	263x125	PLYWOOD	45	180 x 530	400 x 170
10400000R	Tractus PLATFORM	263x125	-	-	215 - 565	400 x 170
10401000	Tractus	263x140	METAL	35	190 - 540	400 x 185
10411000	Tractus+	263x140	PLYWOOD	35	170 - 520	400 x 185
10421000A	Tractus	263x140	METAL	45	190 - 540	400 x 185
10440000A	Tractus+	263x140	PLYWOOD	45	165 - 515	400 x 185
10401000R	Tractus PLATFORM	263x140	-	-	205 - 555	400 x 185
10402000	Tractus	263 x 150	METAL	35	180 - 530	400 x 195
10412000	Tractus+	263 x 150	PLYWOOD	35	155 - 505	400 x 195
10422000A	Tractus	263 x 150	METAL	45	190 - 540	400 x 195
10442000A	Tractus+	263 x 150	PLYWOOD	45	145 - 495	400 x 195
10402000R	Tractus PLATFORM	263 x 150	-	-	200 - 550	400 x 195

# ACCESSORIES

SIDES EXTENSION		COVERS				FRAME	
solid H350	net sides H400	FLAT	H400	H800	H1100	H800	H1100



**MULTI-OFFER SP. Z O. O.**

ul. frezerów 9

20-209 Lublin

e-mail: [bok@przyczepyfaro.pl](mailto:bok@przyczepyfaro.pl)

Web-site: [www.przyczepyfaro.pl](http://www.przyczepyfaro.pl)





This offer is solemnly for information. Considering constant development of our company the producer keeps the right to changes and technical modifications.

**TRACTUS MULTI** - is a modern unbraked car trailer. Wheels are placed outside of the trailer. It's made of the best available materials.

Permissible gross weight is 750 kg. The trailer was made of a endurance sheet what thickness of zinc coat equals 275g/m<sup>2</sup> (A class). Bolted construction of a trailer simplifies elements replacement- used during the regular exploitation and riveted and screwed. Strength of construction is provided by frame made from cold formed stringers . Stringers are U shaped . Special frame , stringers and appreciate number of crossbeams gives a right stiffness and stability of the whole construction. Sides of Tractus are easy removable. It can be easily used as a platform. This trailer was made using components of known producers STEELPRESS, KNOTT and AL-KO. EU homologation.

**ADDITIONAL EQUIPMENT:**

- the frame with a cover H-1100mm, H-800 mm
- flat cover
- spare wheel with bracket
- unbraked axle STEELPRESS 1000 kg with compact bearings (especially recommended for trailer rentals)
- mesh sides extension
- full side extensions
- sides extension

**STANDARD EQUIPMENT:**

- trailer's frame was made from galvanized sheet - thickness 2,5 mm (A class)
- towing hitch V-type was made from a bent galvanized sheet 2,5mm (A class), bolted
- trailer's sides were made of galvanized sheet - thickness 1,5 mm (A class)
- front and back sides are fully openable full metal or filled with plywood
- left and right sides are fully removable full metal or filled with plywood
- towing hitch ball STEELPRESS 750kg or 1300kg made by STEELPRESS
- floor is made of waterproof non-slippery plywood - thickness 9 mm
- unbraked torsional axle STEELPRESS, KNOTT or AL-KO
- mudguards with mudflap are made of polyethylene material
- jockey wheel
- wheels 155 R13 or 155/70R13
- load securing buckle
- side rolls helping install the cover
- electrical installation 12V (in accordance with traffic regulations)
- 7 pins plug or 13 pins



CODE	TYPE	Cargo space dimensions (cm)	Side Type	Side height (cm)	load capacity min. - max. (kg)	External dimensions of the trailer (cm)
1010000U	Tractus Multi	205x125	METAL	35	225 - 575	345 x 170
1011000U	Tractus Multi+	205x125	PLYWOOD	35	255 - 565	345 x 170
1012000AU	Tractus Multi	205x125	METAL	45	220 - 570	345 x 170
1014000U	Tractus Multi+	205x125	PLYWOOD	45	210 - 560	345 x 170
1010000RU	Tractus multi platform	205x125	-	-	235 - 585	345 x 170
10101000U	Tractus Multi	205x140	METAL	35	212 - 562	345 x 185
10111000U	Tractus Multi+	205x140	PLYWOOD	35	199 - 549	345 x 185
10121000U	Tractus Multi	205x140	METAL	45	215 - 565	345 x 185
1014100U	Tractus Multi+	205x140	PLYWOOD	45	205 - 555	345 x 185
10101000RU	Tractus multi platform	205x140	-	-	225 - 575	345 x 185
10200000U	Tractus Multi	220x125	METAL	35	220 - 570	360 x 170
10210000U	Tractus Multi+	220x125	PLYWOOD	35	205 - 555	360 x 170
10220000AU	Tractus Multi	220x125	METAL	45	210 - 560	360 x 170
10240000AU	Tractus Multi+	220x125	PLYWOOD	45	200 - 550	360 x 170
10200000RU	Tractus multi platform	220x125	BRAK	-	230-580	360 x 170
10201000U	Tractus Multi	220x140	METAL	35	198 - 548	360 x 185
10211000U	Tractus Multi+	220x140	PLYWOOD	35	188 - 536	360 x 185
10221000U	Tractus Multi	220x140	METAL	45	205 - 555	360 x 185
10241000U	Tractus Multi+	220x140	PLYWOOD	45	195 - 545	360 x 185
10201000RU	Tractus multi platform	220x140	-	-	215 - 565	360 x 185
10300000U	Tractus Multi	236x125	METAL	35	215 - 565	376 x 170
10310000U	Tractus Multi+	236x125	PLYWOOD	35	200 - 550	376 x 170
10320000AU	Tractus Multi	236x125	METAL	45	205 - 555	376 x 170
10340000AU	Tractus Multi+	236x125	PLYWOOD	45	195 - 545	376 x 170
10300000RU	Tractus multi platform	236x125	-	-	215 - 565	376 x 170
10501000U	Tractus multi	250x140	METAL	35	195 - 545	381 x 185
10511000U	Tractus multi+	250x140	PLYWOOD	35	165 - 515	381 x 185
10521000U	Tractus multi	250x140	METAL	45	190 - 540	381 x 185
10541000U	Tractus multi+	250x140	PLYWOOD	45	155 - 505	381 x 185
10501000RU	Tractus multi platform	250x140	-	-	205 - 555	381 x 185
10400000U	Tractus multi	263x125	METAL	35	205 - 555	400 x 170
10410000U	Tractus multi+	263x125	PLYWOOD	35	185 - 535	400 x 170
10420000AU	Tractus multi	263x125	METAL	45	195 - 545	400 x 170
10440000AU	Tractus multi+	263x125	PLYWOOD	45	180 - 530	400 x 170
10400000RU	Tractus multi platform	263x125	-	-	215 - 565	400 x 170
10402000U	Tractus multi	263x150	METAL	35	180 x 530	400 x 195
10412000U	Tractus multi+	263x150	PLYWOOD	35	155 - 505	400 x 195
10422000U	Tractus multi	263x150	METAL	45	190 - 540	400 x 195
10442000U	Tractus multi+	263x150	PLYWOOD	45	145 - 495	400 x 195
10402000RU	Tractus multi platform	263x150	-	-	200 - 550	400 x 195

## ACCESSORIES

### SIDES EXTENSION

### COVERS

### FRAME

solid H350

net sides H400

plaski

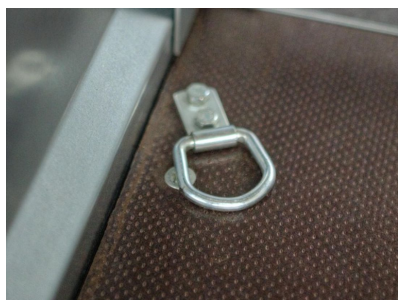
H400

H800

H1100

H800

H1100



MULTI-OFFER SP. Z O. O.

ul. frezerów 9  
20-209 Lublin  
e-mail: [bok@przyczepyfaro.pl](mailto:bok@przyczepyfaro.pl)  
Web-site: [www.przyczepyfaro.pl](http://www.przyczepyfaro.pl)





# TRACTUS FLEX

**faro** trailers

**SIMPLY  
GOOD TRAILERS**



**TRACTUS FLEX** - is a modern unbraked car trailer. Wheels are placed outside of the trailer. It's made of the best available materials.

Due to the use of spring suspension together with a damping shock absorber, the trailer ensures stable handling and perfectly meets the requirements of transporting goods sensitive to shocks, e.g. fruit, flowers.

Permissible gross weight is 750 kg. The trailer was made of an endurance sheet what thickness of zinc coat equals 275g/m<sup>2</sup> (A class). Bolted construction of a trailer simplifies elements replacement- used during the regular exploitation and riveted and screwed. Strength of construction is provided by frame made from cold formed stringers . Stringers are U shaped . Special frame , stringers and appreciate number of crossbeams gives a right stiffness and stability of the whole construction. Sides of Tractus are easy removable. It can be easily used as a platform. This trailer was made using components of known producers STEELPRESS, KNOTT and AL-KO. EU homologation.

#### ADDITIONAL EQUIPMENT:

- the frame with a cover H-1100mm, H-800 mm
- flat cover
- spare wheel
- unbraked axle STEELPRESS 1000 kg with compact bearings (especially recommended for trailer rentals)
- full sides extension
- sides extension



#### STANDARD EQUIPMENT:

- trailer's frame was made from galvanized sheet - thickness 2,5 mm (A class)
- towing hitch V-type was made from a bent galvanized sheet 2,5mm (A class), bolted
- trailer's sides were made of galvanized sheet - thickness 1,5 mm (A class)
- front and back sides are fully openable, full metal or filled with plywood
- left and right sides are fully removable, full metal or filled with plywood
- towing hitch ball STEELPRESS 750kg or 1300kg made by STEELPRESS
- floor is made of waterproof non-slippery plywood - thickness 9 mm
- unbraked torsional axle STEELPRESS, KNOTT or AL-KO
- mudguards with mudflap are made of polyethylene material
- jockey wheel
- wheels 155/80 R13 or 155/70R13
- load securing buckle
- side rolls helping install the cover
- electrical installation 12V (in accordance with traffic regulations)
- 7 pins plug/13 pins plug

This offer is solemnly for information. Considering constant development of our company the producer keeps the right to changes and technical modifications.

CODE	TYPE	Cargo space dimensions (cm)	Side Type	Side height (cm)	load capacity min. - max. (kg)	External dimensions of the trailer (cm)
1010000F	TRACTUS FLEX	205x125	METAL	35	225 - 575	345 x 170
1011000F	TRACTUS FLEX+	205x125	PLYWOOD	35	255 - 565	345 x 170
1012000AF	TRACTUS FLEX	205x125	METAL	45	220 - 570	345 x 170
1014000AF	TRACTUS FLEX+	205x125	PLYWOOD	45	210 - 560	345 x 170
1010000RF	TRACTUS FLEX PLATFORM	205x125	-	-	235 - 585	345 x 170
10101000F	TRACTUS FLEX	205x140	METAL	35	212 - 562	345 x 185
10111000F	TRACTUS FLEX+	205x140	PLYWOOD	35	199 - 549	345 x 185
10121000AF	TRACTUS FLEX	205x140	METAL	45	215 - 565	345 x 185
10141000AF	TRACTUS FLEX+	205x140	PLYWOOD	45	205 - 555	345 x 185
10101000RF	TRACTUS FLEX PLATFORM	205x140	-	-	225 - 575	345 x 185
10200000F	TRACTUS FLEX	220x125	METAL	35	220 - 570	360 x 170
10210000F	TRACTUS FLEX+	220x125	PLYWOOD	35	205 - 555	360 x 170
10220000AF	TRACTUS FLEX	220x125	METAL	45	210 - 560	360 x 170
10240000AF	TRACTUS FLEX+	220x125	PLYWOOD	45	200 - 550	360 x 170
10200000RF	TRACTUS FLEX PLATFORM	220x125	-	-	230 - 580	360 x 170
10201000F	TRACTUS FLEX	220x140	METAL	35	198 - 548	360 x 185
10211000F	TRACTUS FLEX+	220x140	PLYWOOD	35	188 - 536	360 x 185
10221000F	TRACTUS FLEX	220x140	METAL	45	205 - 555	360 x 185
10241000F	TRACTUS FLEX+	220x140	PLYWOOD	45	195 - 545	360 x 185
10201000RF	TRACTUS FLEX PLATFORM	220x140	-	-	215 - 565	360 x 185
10300000F	TRACTUS FLEX	236x125	METAL	35	215 - 565	376 x 170
10310000F	TRACTUS FLEX+	236x125	PLYWOOD	35	205 - 555	376 x 170
10320000AF	TRACTUS FLEX	236x125	METAL	45	215 - 565	376 x 170
10340000AF	TRACTUS FLEX+	236x125	PLYWOOD	45	195 - 545	376 x 170
10300000RF	TRACTUS FLEX PLATFORM	236x125	-	-	215 - 565	376 x 170
10501000F	TRACTUS FLEX	250x140	METAL	35	195 - 545	381 x 185
10511000F	TRACTUS FLEX+	250x140	PLYWOOD	35	165 - 515	381 x 185
10521000F	TRACTUS FLEX	250x140	METAL	45	190 - 540	381 x 185
10541000F	TRACTUS FLEX+	250x140	PLYWOOD	45	155 - 505	381 x 185
10501000RF	TRACTUS FLEX PLATFORM	250x140	-	-	205 - 555	381 x 185
10400000F	TRACTUS FLEX	263x125	METAL	35	205 - 555	400 x 170
10410000F	TRACTUS FLEX+	263x125	PLYWOOD	35	185 - 535	400 x 170
10420000AF	TRACTUS FLEX	263x125	METAL	45	195 - 545	400 x 170
10440000AF	TRACTUS FLEX+	263x125	PLYWOOD	45	180 - 530	400 x 170
10400000RF	TRACTUS FLEX PLATFORM	263x125	-	-	215 - 565	400 x 170
10402000F	TRACTUS FLEX	263x150	METAL	35	180 x 530	400 x 195
10412000F	TRACTUS FLEX+	263x150	PLYWOOD	35	155 - 505	400 x 195
10422000F	TRACTUS FLEX	263x150	METAL	45	190 - 540	400 x 195
10442000F	TRACTUS FLEX+	263x150	PLYWOOD	45	145 - 495	400 x 195
10402000RF	TRACTUS FLEX PLATFORM	263x150	-	-	200 - 550	400 x 195

## ACCESSORIES

### SIDES EXTENSION

solid h350

net sides H400

### COVERS

flat

H400

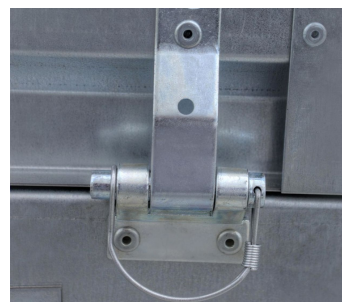
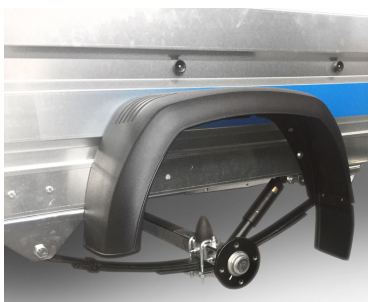
H800

H1100

### FRAME

H800

H1100



MULTI-OFFER SP. Z O. O.

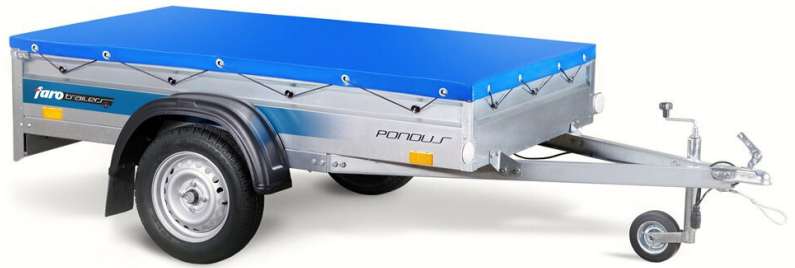
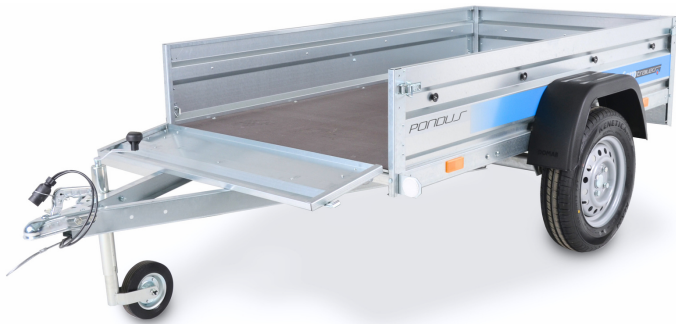
ul. frezerów 9  
20-209 Lublin  
e-mail: [bok@przyczepyfaro.pl](mailto:bok@przyczepyfaro.pl)  
Web-site: [www.przyczepyfaro.pl](http://www.przyczepyfaro.pl)



# PONDUS

faro trailers

SIMPLY  
GOOD TRAILERS



**PONDUS** - is a light trailer suitable for a clients looking for a small and functional option in economic price.

The trailer was made of a sheet what thickness of zinc coat equals 275g/m<sup>2</sup> (A class). This kind of material is characterized by very good corrosion and oxidation resistance. It joins good look with steel strength. Bolted construction of a trailer simplifies elements replacement- used during the regular exploitation and riveted and screwed. Screws class 8.8 were used to build this trailer. It's suspension is a torsional axis with mounted compact bearings (double row angular ball bearings). This kind of bearings were designed for a distant mileage. Sealed and greased they don't require any regulations or maintenance. Double sealing of the bearings protect them from dirt and water. EU homologation.

#### ADDITIONAL EQUIPMENT:

- the frame with a cover
- flat cover
- mesh sides extension
- sides extension



#### STANDARD EQUIPMENT:

- frame and shaft of a trailer was made of a bent galvanized 2mm sheet (A class)
- towing hitch ball 750 kg made by STEELPRESS/Knott
- trailer's sides H-320mm , made of galvanized sheet - thickness 1,25 mm
- front side is attached permanently
- back side is openable
- mudguards with mudflap are made of polyethylene material
- floor is made of waterproof non-slippery plywood - thickness 9 mm
- wheels 155/70R13 or 165/70R13
- jockey wheel
- STEELPRESS, KNOTT or AL-KO unbraked torsional axle (double row angular ball bearings)
- electrical installation 12V (in accordance with traffic regulations)
- 7 pins plug or 13 pins plug

This offer is solemnly for information. Considering constant development of our company the producer keeps the right to changes and technical modifications.

CODE	TYPE	Dimensions of cargo space (cm)	TYPE OF SIDE	Side height (cm)	Capacity min. - max. (kg)	External dimensions of the trailer (cm)
11200000	PONDUS	165 x 112	METAL	32	230 - 630	262 x 155
11300000	PONDUS	205 x 112	METAL	32	220 - 620	300 x 155
11400000	PONDUS	205 x 125	METAL	32	210 - 610	300 x 170
11430000	PONDUS	236 x 125	METAL	32	200 - 590	331 x 170
11404000M	PONDUS	263 x 130	METAL	32	180 - 580	357 x 175

## ACCESSORIES

### SIDES EXTENSION

### COVERS

### FRAME

solid H350

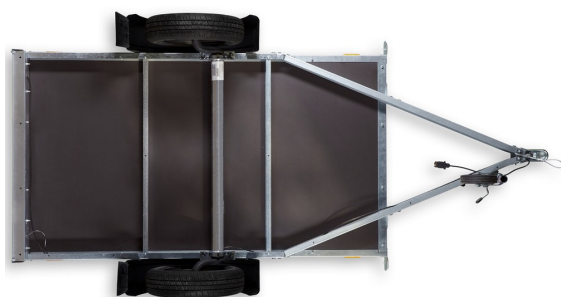
net sides  
H400

flat H400

H400

H800

H800



MULTI-OFFER SP. Z O. O.

ul. frezerów 9

20-209 Lublin

e-mail: [bok@przyczepyfaro.pl](mailto:bok@przyczepyfaro.pl)

Web-site: [www.przyczepyfaro.pl](http://www.przyczepyfaro.pl)





**SOLIDUS** - is a modern line of car trailers with an outside mounted wheels. This trailers are made of the best available materials.

Chassis suspension are two unbraked torsional axes 750kg or 1000 kg. Permissible gross weight is 750kg. The trailer was made from a sheet what thickness of zinc coat equals 275g/m<sup>2</sup> (A Class). Bolted construction of a trailer simplifies elements replacement- used during the regular exploitation and riveted and screwed. Strength of construction is provided by frame made from cold formed stringers . Stringers are U shaped . Special frame, stringers and appreciate number of crossbeams gives a right stiffness and stability of the whole construction. Sides of Tractus are easy removable. It can be easily used as a platform. This trailer was made using components of known producers STEELPRESS and AL-KO. EU homologation.

#### ADDITIONAL EQUIPMENT:

- the frame with a cover H-1100mm, H-800 mm
- flat cover
- spare wheel
- spare wheel with bracket
- unbraked axles STEELPRESS 1000 kg with a compact bearings (especially recommended for trailer rentals)
- mesh sides extension
- sides extension



#### STANDARD EQUIPMENT:

- Trailer's frame was made from galvanized sheet-thickness 2,5 mm (A class)
- towing hitch V-type was made of a bent galvanized sheet 2,5 mm (A class), bolted
- trailer's sides were made of galvanized sheet - thickness 1,25 mm (A class)
- front and back sides are fully openable, full metal or plywood
- left and right sides are fully removable, full metal or plywood
- towing hitch ball 750 or 1300kg made by STEELPRESS or AL-KO
- mudguards with mudslap are made of polyethylene material
- jockey wheel
- wheels 155/70R13 or 165/70R13
- load securing buckle
- side rolls helping install the cover
- electrical installation 12V (in accordance with traffic regulations)
- 7 pins plug or 13 pins plug

This offer is solemnly for information. Considering constant development of our company the producer keeps the right to changes and technical modifications.

CODE	TYPE	Dimensions of cargo space (cm)	TYPE OF SIDE	Side height (cm)	Capacity min. - max. (kg)	External dimensions of the trailer (cm)
12300000	SOLIDUS	236X125	METAL	35	270 - 520	376 x 170
12300000A	SOLIDUS	236X125	METAL	45	270 - 520	376 x 170
12310000	SOLIDUS+	236X125	PLYWOOD	35	260 - 510	376 x 170
12310000A	SOLIDUS+	236X125	PLYWOOD	45	250 - 500	376 x 170
12300000R	SOLIDUS PLATFORM	236X125	-	-	280 - 530	376 x 170
12400000	SOLIDUS	263x125	METAL	35	260 - 510	400 x 170
12400000A	SOLIDUS	263x125	METAL	45	260 - 510	400 x 170
12410000	SOLIDUS+	263x125	PLYWOOD	35	250 - 500	400 x 170
12410000A	SOLIDUS+	263x125	PLYWOOD	45	240 - 490	400 x 170
12400000R	SOLIDUS PLATFORM	263x125	-	-	270 - 520	400 x 170
12402000	SOLIDUS	263x150	METAL	35	240 x 490	400 x 195
12412000	SOLIDUS+	263x150	PLYWOOD	35	225 - 475	400 x 195
12402000A	SOLIDUS	263x150	METAL	45	230 - 480	400 x 195
12412000A	SOLIDUS+	263x150	PLYWOOD	45	220 - 470	400 x 195
12402000R	SOLIDUS PLATFORM	263x150	-	-	250 - 500	400 x 195
12502000	SOLIDUS	300x150	METAL	35	220 - 470	436 x 195
12512000	SOLIDUS+	300x150	PLYWOOD	35	195 - 445	436 x 195
12502000A	SOLIDUS	300x150	METAL	45	200 - 450	436 x 195
12512000A	SOLIDUS+	300x150	PLYWOOD	45	170 - 420	436 x 195
12502000R	SOLIDUS PLATFORM	300x150	-	-	230 - 480	436 x 195
12503200	SOLIDUS	300x170	METAL	35	180 - 430	436 x 215
12513000	SOLIDUS+	300x170	PLYWOOD	35	150 - 400	436 x 215
12503000A	SOLIDUS	300x170	METAL	45	170 - 420	436 x 215
12513000A	SOLIDUS+	300x170	PLYWOOD	45	140 - 390	436 x 215
12503200R	SOLIDUS PLATFORM	300x170	-	-	210 - 460	436 x 215
12602000	SOLIDUS	330x150	METAL	35	200 - 450	466 x 195
12612000	SOLIDUS+	330x150	PLYWOOD	35	175-425	466 x 195
12602000R	SOLIDUS PLATFORM	330x150	-	-	220 - 470	466 x 195
12603000	SOLIDUS	330X170	METAL	35	160 - 410	466 x 215
12613000	SOLIDUS+	330X170	PLYWOOD	35	130 - 400	466 x 215
12623000A	SOLIDUS	330X170	METAL	45	150-400	466 x 215
12643000A	SOLIDUS+	330X170	PLYWOOD	45	120 - 370	466 x 215
12603000R	SOLIDUS PLATFORM	330X170	-	-	200 - 450	466 x 215

## ACCESSORIES

### SIDES EXTENSION

### COVERS

### FRAME

solid H350

net sides  
H400

flat

H400

H800

H1100

H1300

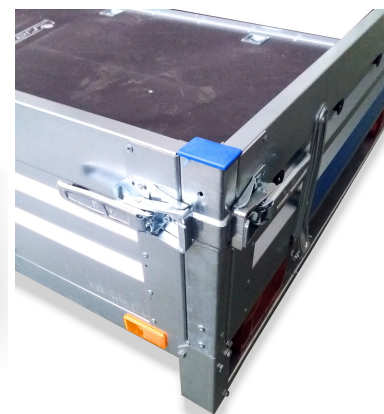
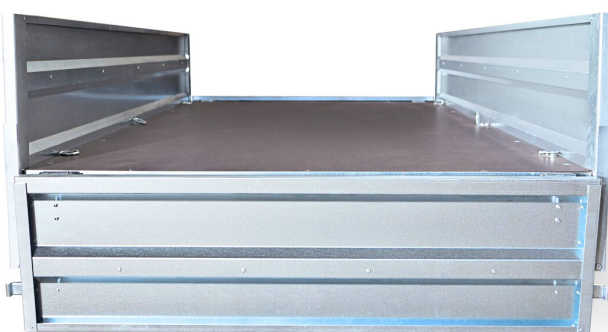
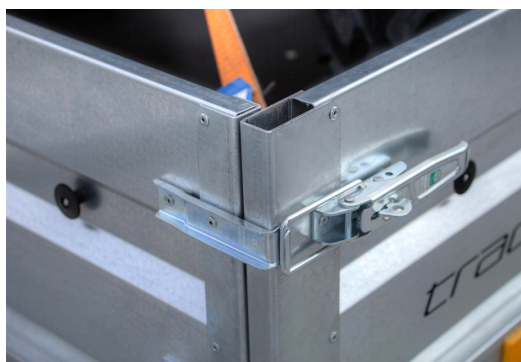
H1400

H800

H1100

H1300

H1400



## MULTI-OFFER SP. Z O. O.

ul. frezerów 9  
20-209 Lublin

e-mail: [bok@przyczepyfaro.pl](mailto:bok@przyczepyfaro.pl)

Web-site: [www.przyczepyfaro.pl](http://www.przyczepyfaro.pl)





**MAGICUS** - is multifunctional trailer with road wheels under the loading platform. Thanks to the use of the best materials and the lack of construction simplifications, it is durable for all applications.

The chassis is two axles unbraked 750 kg or 1000kg. Permissible total weight is even 750kg. The trailer is made of sheets, wherein the thickness of the zinc coating is 275g / m<sup>2</sup> (Class A). Bolted construction of a trailer simplifies elements replacement- used during the regular exploitation and riveted and screwed. Structural strength provides frame made of cold-formed stringers in the shape of U, and the right amount of cross beams giving adequate rigidity and durability. The sides of the trailer can easily be removed and used as a platform. The trailer was made on components known firm STEELPRESS, KNOTT, AND AL-KO. EU homologation.

**ADDITIONAL EQUIPMENT:**

- the frame with a cover H-1100mm, H-800 mm
- flat cover
- spare wheel with bracket
- unbraked axle Steelpress 1000 kg with a compact bearings (especially recommended for trailer rentals)
- full side extensions (can be reinforced with plywood)
- sides extension

**STANDARD EQUIPMENT:**

- trailer's frame was made of galvanized sheet- thickness 2,5 mm (A class)
- V-drawbar was made of a bent galvanized sheet 2,5mm (A class), bolted
- trailer's sides were made of galvanized sheet - thickness 1,25 mm (A class)
- front and back sides are fully openable, full metal or plywood
- left and right sides are fully removable, full metal or plywood
- full steel sides or filled with plywood
- towing hitch ball 750 kg made by STEELPRESS
- floor is made of waterproof non-slippery plywood - thickness 9 mm
- 2 axles unbraked 750 or 1300 kgs. STEELPRESS
- mudguards with mudflap are made of polyethylene material
- jockey wheel
- wheels 155/70 R13 or 195/50R13C
- load securing buckle
- side rolls helping install the cover
- electrical installation 12V (in accordance with traffic regulations)
- 7 pins plug or 13 pins plug

Oferta jest wyłącznie w celach informacyjnych. Biorąc pod uwagę ciągły rozwój naszej firmy producent zachowuje sobie prawo do wprowadzania zmian i modyfikacji technicznych.

CODE	TYPE	Dimensions of cargo space (cm)	TYPE OF SIDE	Side height (cm)	Capacity min. - max. (kg)	External dimensions of the trailer (cm)
13402000	MAGICUS	263x150	METAL	35	200 - 450	405 x 157
13412000	MAGICUS+	263x150	PLYWOOD	35	175 - 425	405 x 157
13402000R	MAGICUS PLATFORM	263x150	-	-	220 - 470	405 x 157
13500000	MAGICUS	300x150	METAL	35	175 - 425	440 x 157
13500000A	MAGICUS+	300x150	PLYWOOD	35	150-400	440 x 157
13500000R	MAGICUS PLATFORM	300x150	-	-	200 - 450	440 x 157
13600000	MAGICUS	330x150	METAL	35	155 - 405	470 x 157
13600000A	MAGICUS+	330x150	PLYWOOD	35	130 - 380	470 x 157
13600000R	MAGICUS PLATFORM	330x150	-	-	180 x 430	470 x 157

## ACCESSORIES

SIDES EXTENSION		COVER			FRAME	
Solid H350	net sides H400	flat	H800	H1100	H800	H1100



**MULTI-OFFER SP. Z O. O.**

ul. frezerów 9

20-209 Lublin

e-mail: [bok@przyczepyfaro.pl](mailto:bok@przyczepyfaro.pl)

Web-site: [www.przyczepyfaro.pl](http://www.przyczepyfaro.pl)





# MAGICUS MAX

**taro** trailers

SIMPLY  
GOOD TRAILERS



**MAGICUS MAX** - is a line of braked trailers offered in three classes with GVM up to 1,400 kg, 2,000 kg and GVM up to 2,700 kg. The chassis is two axles and offered in three DMC ranges. The trailer is made of sheets, where in the thickness of the zinc coating is 275g / m<sup>2</sup> (Class A). Bolted construction of a trailer simplifies elements replacement- used during the regular exploitation and riveted and screwed. Available in a version with a frame and tarpaulin, as well as in a version with sides filled with plywood. The trailer was made on components known firm STEELPRESS, KNOTT, AND AL-KO. A trailer with many applications, both for business and other demanding users. EU homologation.

#### ADDITIONAL EQUIPMENT:

- the frame with a cover H-1100mm, H-800 mm
- flat cover
- spare wheel with bracket
- mesh sides extension
- sides extension
- plywood sides
- ramps overrun 350 kg



#### STANDARD EQUIPMENT:

- shaft homologated AL-KO or KNOTT
- trailer's sides were made of galvanized sheet - thickness 1,25 mm (A class)
- front and back sides are fully openable/dismantled full metal or filled with plywood
- left and right sides are fully removable, full metal or filled with plywood
- towing hitch made by Knott
- floor is made of waterproof non-slippery plywood - thickness 12 mm
- 2 axles braked AL-KO or KNOTT
- steel mudguards
- jockey wheel
- wheels 165 13C or 165/13C
- load securing buckle 6pcs in floor and 8 in frame
- rails for ramps transportation
- side rolls helping install the cover
- electrical installation 12V (in accordance with traffic regulations)
- 7 pins plug or 13 pins plug

This offer is solemnly for information. Considering constant development of our company the producer keeps the right to changes and technical modifications.

CODE	TYPE	Dimensions of cargo space (cm)	TYPE OF SIDE	Side height (cm)	Capacity min. - max. (kg)	External dimensions of the trailer (cm)	Permissible total weight min. - max. (kg)
16501000-14	MAGICUS MAX	300 x 161	METAL	35	410 - 810	442 x 167	1000 - 1400
16511000-14	MAGICUS MAX+	300 x 161	PLYWOOD	35	380 - 780	442 x 167	1000 - 1400
16501000R-14	MAGICUS MAX PLATFORM	300 x 161	-	-	440 - 840	442 x 167	1000 - 1400
16501000-20	MAGICUS MAX	300 x 161	METAL	35	810 - 1410	442 x 167	1400 - 2000
16511000-20	MAGICUS MAX+	300 x 161	PLYWOOD	35	780 - 1380	442 x 167	1400 - 2000
16501000R-20	MAGICUS MAX PLATFORM	300 x 161	-	-	840 - 1440	442 x 167	1400 - 2000
16501000-27	MAGICUS MAX	300 x 161	METAL	35	1410 - 2110	442 x 167	2000 - 2700
16511000-27	MAGICUS MAX+	300 x 161	PLYWOOD	35	1380 - 2080	442 x 167	2000 - 2700
16501000R-27	MAGICUS MAX PLATFORM	300 x 161	-	-	1440 - 2140	442 x 167	2000 - 2700
16402000-14	MAGICUS MAX	263 X 161	METAL	35	460 - 860	405 x 167	1000 - 1400
16412000-14	MAGICUS MAX+	263 X 161	PLYWOOD	35	440 - 840	405 x 167	1000 - 1400
16402000R-14	MAGICUS MAX PLATFORM	263 X 161	-	-	490 - 890	405 x 167	1000 - 1400
16402000-20	MAGICUS MAX	263 X 161	METAL	35	860 - 1460	405 x 167	1400 - 2000
16412000-20	MAGICUS MAX+	263 X 161	PLYWOOD	35	840 - 1440	405 x 167	1400 - 2000
16402000R-20	MAGICUS MAX PLATFORM	263 X 161	-	-	890 - 1490	405 x 167	1400 - 2000
16402000-27	MAGICUS MAX	263 X 161	METAL	35	1460 - 2160	405 x 167	2000 - 2700
16412000-27	MAGICUS MAX+	263 X 161	PLYWOOD	35	1440 - 2140	405 x 167	2000 - 2700
16402000R-27	MAGICUS MAX PLATFORM	263 X 161	-	-	1490 x 2190	405 x 167	2000 - 2700
16602000 -14	MAGICUS MAX	330 x 161	METAL	35	380 - 780	472 x 167	1000 - 1400
16612000-14	MAGICUS MAX+	330 x 161	PLYWOOD	35	350 - 750	472 x 167	1000 - 1400
16602000R -14	MAGICUS MAX PLATFORM	330 x 161	-	-	410 - 810	472 x 167	1000 - 1400
16602000 -20	MAGICUS MAX	330 x 161	METAL	35	780 - 1380	472 x 167	1400 - 2000
16612000-20	MAGICUS+ MAX	330 x 161	PLYWOOD	35	750 - 1350	472 x 167	1400 - 2000
16602000R -20	MAGICUS MAX PLATFORM	330 x 161	-	-	810 - 1410	472 x 167	1400 - 2000
16602000 -27	MAGICUS MAX	330 x 161	METAL	35	1380 - 2080	472 x 167	2000 - 2700
16612000-27	MAGICUS+ MAX	330 x 161	PLYWOOD	35	1350 - 2050	472 x 167	2000 - 2700
16602000R -27	MAGICUS MAX PLATFORM	330 x 161	-	-	1410 - 2110	472 x 167	2000 - 2700

## ACCESSORIES

Ramp 350kg



**MULTI-OFFER SP. Z O. O.**

ul. frezerów 9  
20-209 Lublin

e-mail: [bok@przyczepyfaro.pl](mailto:bok@przyczepyfaro.pl)

Web-site: [www.przyczepyfaro.pl](http://www.przyczepyfaro.pl)





**SOLIDUS MAX** - is a line of braked trailers offered in two classes with DMC up to 1400kg-2000kg to 2700 kg. The steel elements are made of high quality sheet covered with a layer of zinc (class A). Bolted construction of a trailer simplifies elements replacement- used during the regular exploitation and riveted and screwed. Available in a version with a frame and cover, as well as a version with sides filled with plywood. The high quality braking system from KNOT or AL-KO guarantees comfortable driving. The trailer with many applications for both business and other demanding users. EU homologation.

#### ADDITIONAL EQUIPMENT:

- the frame with a cover H-1100mm, H-800 mm
- flat frame
- spare wheel with a support
- net sides extension
- sides extension
- sides filled with plywood

#### STANDARD EQUIPMENT:

- trailer's frame was made from galvanized sheet-thickness 2,5 mm (A class)
- drawbar homologated bolted AL-KO or KNOTT
- trailer's sides were made from galvanized sheet - thickness 1,25 mm (A class)
- front and back sides are fully openable, full metal or filled with plywood
- left and right sides are fully removable, full metal or filled with plywood
- Ramp device AL-KO or KNOTT
- floor is made from waterproof non-slippery plywood - thickness 12 mm
- 2 axles braked AL-KO or KNOTT
- fenders are made from polyethylene material
- support wheel with a handle
- load securing buckle in floor
- side rolls helping install the cover
- electrical installation 12V (in accordance with traffic regulations)
- 7 pins plug or 13 pins plug

This offer is solemnly for information. Considering constant development of our company the producer keeps the right to changes and technical modifications.



CODE	TYPE	Dimensions of cargo space (cm)	TYPE OF SIDE	Side height (cm)	Capacity min. - max. (kg)	External dimensions of the trailer (cm)	Permissible total weight min. - max. (kg)
15400101-14	Solidus Max	263 x 125	METAL	35	670 - 1070	405 x 176	1000 - 1400
15400101A-14	Solidus Max+	263x125	PLYWOOD	35	640 - 1040	405 x 176	1000 - 1400
15400101-14R	Solidus Max platform	263x125	-	-	690 - 1090	405 x 176	1000 - 1400
15400101-20	Solidus Max	263x125	METAL	35	1070 - 1670	405x176	1400 - 2000
15400101A-20	Solidus Max+	263x125	PLYWOOD	35	1040 - 1690	405 x 176	1400 - 2000
15400101-20R	Solidus Max platform	263x125	-	-	1090 - 1690	405 x 176	1400 - 2000
15400101-27	Solidus Max	263x125	METAL	35	1670 - 2370	405 x 176	2000 - 2700
15400101A-27	Solidus Max+	263x125	PLYWOOD	35	1640 - 2340	405 x 176	2000 - 2700
15400101-27R	Solidus Max platform	263x125	-	-	1690 - 2390	405 x 176	2000 - 2700
15400100-14	Solidus Max	263x150	METAL	35	620 - 1020	405 - 201	1000 - 1400
15400100A-14	Solidus Max+	263x150	PLYWOOD	35	600 - 1000	405 - 201	1000 - 1400
15400100-14R	Solidus Max platform	263x150	-	-	640 - 1040	405 - 201	1000 - 1400
15400100-20	Solidus Max	263x150	METAL	35	1020 - 1620	405 - 201	1400 - 2000
15400100A-20	Solidus Max+	263x150	PLYWOOD	35	1000 - 1600	405 - 201	1400 - 2000
15400100-20R	Solidus Max platform	263x150	-	-	1040 - 1640	405 - 201	1400 - 2000
15400100-27	Solidus Max	263x150	METAL	35	1620 - 2320	405 - 201	2000 - 2700
15400100A-27	Solidus Max+	263x150	PLYWOOD	35	1600 - 2300	405 - 201	2000 - 2700
15400100-27R	Solidus Max platform	263x150	-	-	1640 - 2340	405 - 201	2000 - 2700
15500100-14	Solidus Max	300x150	METAL	35	610 - 1010	442 x 201	1000 - 1400
15500100A-14	Solidus Max+	300x150	PLYWOOD	35	590 - 990	452 x 197	1000 - 1400
15500100-14R	Solidus Max platform	300x150	-	-	630 - 1030	442 x 201	1000 - 1400
15500100-20	Solidus Max	300x150	METAL	35	1010 - 1610	442 x 201	1400 - 2000
15500100A-20	Solidus Max+	300x150	PLYWOOD	35	990 - 1590	442 x 201	1400 - 2000
15500100-20R	Solidus Max platform	300x150	-	-	1030 - 1630	442 x 201	1400 - 2000
15500100-27	Solidus Max	300x150	METAL	35	1610 - 2310	442 x 201	2000 - 2700
15500100A-27	Solidus Max+	300x150	PLYWOOD	35	1590 - 2290	442 x 201	2000 - 2700
15500100-27R	Solidus Max platform	300x150	-	-	1630 - 2330	442 x 201	2000 - 2700
15600100-14	Solidus Max	330x150	METAL	35	590 - 990	472 x 201	1000 - 1400
15600100A-14	Solidus Max+	330x150	PLYWOOD	35	560 - 960	472 x 201	1000 - 1400
15600100-14R	Solidus Max platform	330x150	-	-	610 - 1010	472 x 201	1000 - 1400
15600100-20	Solidus Max	330x150	METAL	35	990 - 1590	472 x 201	1400 - 2000
15600100A-20	Solidus Max+	330x150	PLYWOOD	35	960 - 1560	472 x 201	1400 - 2000
15600100-20R	Solidus Max platform	330x150	-	-	1010 - 1610	472 x 201	1400 - 2000
15600100-27	Solidus Max	330x150	METAL	35	1590 - 2290	472 x 201	2000 - 2700
15600100A-27	Solidus Max+	330x150	PLYWOOD	35	1560 - 2260	472 x 201	2000 - 2700
15600100-27R	Solidus Max platform	330x150	-	-	1610 - 2310	472 x 201	2000 - 2700



MULTI-OFFER SP. Z O. O.

ul. frezerów 9  
20-209 Lublin

e-mail: [bok@przyczepyfaro.pl](mailto:bok@przyczepyfaro.pl)

Strona internetowa: [www.przyczepyfaro.pl](http://www.przyczepyfaro.pl)





## AQUA - trailer to carry boats or personal watercrafts.

Trailer frame is made of rectangular, cold-bent steel profiles. The steel elements are coated with zinc, which results in a high level of corrosion resistance. Equipped with side rollers and slides trailer is designed both for transporting of boats and personal watercraft.

The trailer is equipped with a plurality of elements having a regulatory function. Due to sliding drawbar, adjustable mechanism of winch and rollers, the trailer is designed for transporting of boats of different sizes. The rear panel of lighting is easily disassembled, which increases comfort, allows loading / unloading in water. The trailer was made on components known reputable companies STEELPRESS, KNOTT and AL-KO. EU homologation.

### ADDITIONAL EQUIPMENT:

- spare wheel

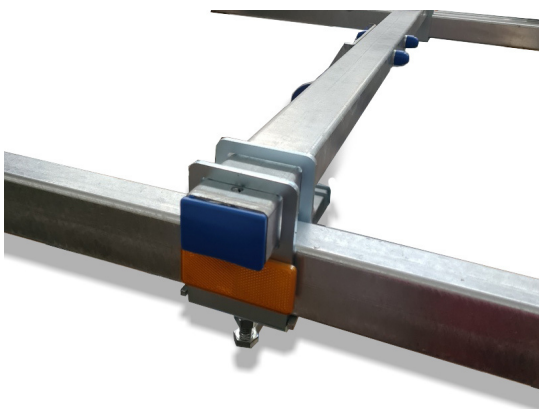
### STANDARD EQUIPMENT:

- water scooter slides or side rollers, middle rollers
- stem
- winch belt 500kg
- towing hitch ball 750 kg
- rear panel floor regulated (disassembled)
- belt mounting points
- axle 750 kgs, waterproofed regulated
- polyethylene mudguards
- wheels 155/70R13
- electrical installation 12V (in accordance with traffic regulations)
- 7 pins plug



This offer is solemnly for information. Considering constant development of our company the producer keeps the right to changes and technical modifications.

CODE	TYPE	MODEL	External dimensions of the trailer (cm)	Maximum boat length	Minimum boat length	Equipment
14300100	AQUA	AQUA 5,2 SLIDES	3,8x1,7m	520cm	315cm	1,5m slides bottom roller winch 500kg
14300000	AQUA	AQUA 5,2 ROLLS	3,8x1,7m	520cm	315cm	1,5m slides bottom roller winch 500kg
14100100	AQUA	AQUA 2,8 SLIDES	3,8x1,7m	366cm	215cm	1,5m slides bottom roller winch 500kg
14100000	AQUA	AQUA 2,8 ROLLS	3,8x1,7m	366cm	215cm	1,5m slides bottom roller winch 500kg
14000100	AQUA	AQUA 4,3 SLIDES	4,9x1,7m	400cm	245cm	2m slides or 2 side rollers 2 bottom rollers winch 500kg
14000000	AQUA	AQUA 4,3 ROLLS	4,9x1,7m	400cm	245cm	2m slides or 2 side rollers 2 bottom rollers winch 500kg



**MULTI-OFFER SP. Z O. O.**

ul. frezerów 9  
20-209 Lublin  
e-mail: [bok@przyczepyfaro.pl](mailto:bok@przyczepyfaro.pl)  
Web-site: [www.przyczepyfaro.pl](http://www.przyczepyfaro.pl)





**AQUA FLEX** - trailer to carry boats or personal watercrafts, equipped with spring suspension and a damping shock absorber.

Trailer frame is made of rectangular, cold-bent steel profiles. The steel elements are coated with zinc, which results in a high level of corrosion resistance.

Equipped with side rollers and slides trailer is designed both for transporting of boats and personal watercraft. The trailer is equipped with a plurality of elements having a regulatory function. Due to sliding drawbar, adjustable mechanism of winch and rollers, the trailer is designed for transporting of boats of different sizes. The rear panel of lighting is easily disassembled, which increases comfort, allows loading/ unloading in water. The trailer was made on components known reputable companies STEELPRESS, KNOTT and AL-KO. EU homologation.

**ADDITIONAL EQUIPMENT:**

- spare wheel



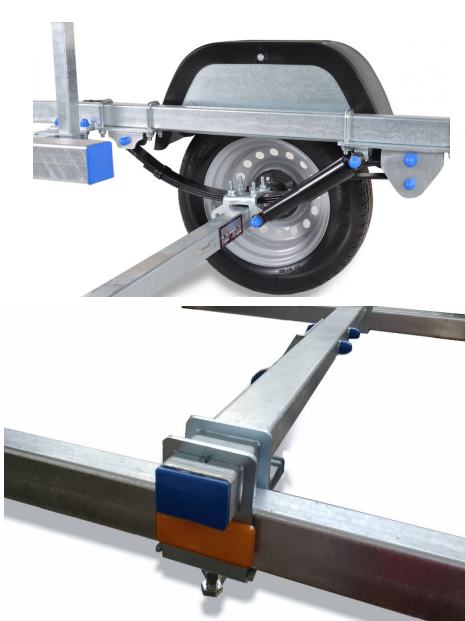
**STANDARD EQUIPMENT:**

- jockey wheel
- side rolls and middle rolls or slides
- stem
- belt winch 500kg
- towing hitch ball 750 kg
- rear panel floor regulated (disassembled)
- belt mounting points
- axle 750 kgs, waterproofed regulated
- polyethylene mudguards
- wheels 155/70R13
- electrical installation 12V (in accordance with traffic regulations)
- 7 pin plug

This offer is solemnly for information. Considering constant development of our company the producer keeps the right to changes and technical modifications.

# AQUA FLEX

CODE	TYPE	MODEL	External dimensions of the trailer (cm)	Recommended max boat length	Capacity min. - max. (kg)	Equipment
1400000F	AQUA FLEX	AQUA FLEX 4,3 ROLLS	482x169cm	~400cm	200 - 600kg	Adjustable side rollers, adjustable bottom rollers, stem, winch with 450 kg belt
14000100F	AQUA FLEX	AQUA FLEX 4,3 SLIDES	482x169cm	~400cm	200 - 600kg	Adjustable side slides 2 m, adjustable bottom rollers, stem, winch with 450 kg belt
14200000F	AQUA FLEX	AQUA FLEX 5, 2 ROLLS	600x169cm	~520cm	190 - 590kg	Adjustable side rollers, adjustable bottom rollers, stem, winch with 450 kg belt
14200100F	AQUA FLEX	AQUA FLEX 5,2 SLIDES	600x169cm	~520cm	190 - 590kg	Adjustable side slides 2 m, adjustable bottom rollers, stem, winch with 450 kg belt



**MULTI-OFFER SP. Z O. O.**

ul. frezerów 9  
20-209 Lublin  
e-mail: [bok@przyczepyfaro.pl](mailto:bok@przyczepyfaro.pl)  
Web-site: [www.przyczepyfaro.pl](http://www.przyczepyfaro.pl)





# AQUA TOP



**AQUA TOP** - exclusive trailer to carry boats or personal watercrafts.

The trailer frame is made of cold-bent steel profiles with a rectangular cross-section. Frame structure elements protected with a cathode ray coating and finished with a black powder coating. Equipped with side rollers or slides, the trailer is suitable for transporting both boats and water scooters. The trailer is equipped with numerous elements with adjustment functions that allow you to transport boats of various sizes. Rear LED lighting mounted on tilting arms, which allows you to launch the boat without having to dismantle the rear beam. The trailer was made on components known reputable companies STEELPRESS, KNOTT and AL-KO. EU homologation.

**ADDITIONAL EQUIPMENT:**

- spare wheel,

**STANDARD EQUIPMENT:**

- jockey wheel
- stem
- belt winch 500kg
- side rolls and middle rolls or slides
- towing hitch ball 750 kg
- tiltable rear arms
- belt mounting points
- axle 750 kgs, waterproofed regulated
- polyethylene mudguards
- wheels 155/70R13, polished aluminum rims
- electrical installation 12V (in accordance with traffic regulations)
- 7 pin plug
- LED rear lamps waterproof class IP68



This offer is solemnly for information. Considering constant development of our company the producer keeps the right to changes and technical modifications.

# AQUA TOP

**faro** TRAILERS

**GVW - 750KG**

CODE	TYPE	MODEL	External dimensions of the trailer (cm)	Recommended max boat length	Capacity min. - max. (kg)	Equipment
14100000T	AQUA TOP	AQUA TOP 2,8 ROLLS	360x169cm	~278cm	210 - 610kg	Adjustable side rollers, adjustable bottom rollers, stem, winch with 450 kg belt
14100100T	AQUA TOP	AQUA TOP 2,8 SLIDES	360x169cm	~278cm	210 - 610kg	Adjustable side slides 1,5 m, adjustable bottom rollers, stem, winch with 450 kg belt
14000000T	AQUA TOP	AQUA TOP 4,3 ROLLS	394x169cm	~312cm	200 - 600kg	Adjustable side rollers, adjustable bottom rollers, stem, winch with 450 kg belt
14000100T	AQUA TOP	AQUA TOP 4,3 SLIDES	394x169cm	~312cm	200 - 600kg	Adjustable side slides 2 m, adjustable bottom rollers, stem, winch with 450 kg belt
14200000T	AQUA TOP	AQUA TOP 5,2 ROLL	512x169cm	~432cm	190 - 590kg	Adjustable side rollers, adjustable bottom rollers, stem, winch with 450 kg belt
14200100T	AQUA TOP	AQUA TOP 5,2 SLIDES	512x169cm	~432cm	190 - 590kg	Adjustable side slides 2 m, adjustable bottom rollers, stem, winch with 450 kg belt
14000000TF	AQUA TOP FLEX	AQUA TOP FLEX 4,3 ROLLS	394x169cm	~312cm	200 - 600kg	Adjustable side rollers, adjustable bottom rollers, stem, winch with 450 kg belt
14000100TF	AQUA TOP FLEX	AQUA TOP FLEX 4,3 SLIDES	394x169cm	~312cm	200 - 600kg	Adjustable side slides 2 m, adjustable bottom rollers, stem, winch with 450 kg belt
14200000TF	AQUA TOP FLEX	AQUA TOP FLEX 5,2 ROLLS	512x169cm	~432cm	190 - 590kg	Adjustable side rollers, adjustable bottom rollers, stem, winch with 450 kg belt
14200100TF	AQUA TOP FLEX	AQUA TOP FLEX 5,2 SLIDES	512x169cm	~432cm	190 - 590kg	Adjustable side slides 2 m, adjustable bottom rollers, stem, winch with 450 kg belt



**MULTI-OFFER SP. Z O. O.**

ul. frezerów 9  
20-209 Lublin

e-mail: [bok@przyczepyfaro.pl](mailto:bok@przyczepyfaro.pl)

Strona internetowa: [www.przyczepyfaro.pl](http://www.przyczepyfaro.pl)



# AMICUS

faro trailers

SIMPLY  
GOOD TRAILERS



**Amicus** - is a universal trailer designed to transport motorcycles and other light vehicles such as quads and self-propelled lawn mowers.

The trailer was made of a endurance sheet what thickness of zinc coat equals 275g/m<sup>2</sup> (A class). This material is characterized by very good resistance to corrosion and oxidation, and combines good appearance with the strength of steel. Bolted construction of a trailer simplifies elements replacement- used during the regular exploitation and riveted and screwed. The trailer suspension is a torsion axle with compact bearings (double-row angular contact ball bearing). Designed for high mileage, sealed and lubricated, they do not require any adjustment or maintenance. Double sealing prevents dirt and water from entering the bearing. The trailer floor is made of an aluminum checkered sheet ensuring aesthetics, a convenient universal load securing system and washing the load on the trailer. European homologation.

#### ADDITIONAL EQUIPMENT:

- Front wheel mounting
- Aluminum ramp 2.2 m
- Floor handles



#### STANDARD EQUIPMENT:

- frame and shaft of a trailer was made of a bent galvanized 2,5mm sheet (A class)
- towing hitch ball 750 kg made by STEELPRESS, KNOTT, ALKO
- trailer's sides H-320mm
- made of galvanized sheet – thickness 1,25 mm
- mudguards with mudflap are made of polyethylene material
- floor made of 4mm perforated aluminum sheet,
- wheels 155/70 R13 or 155/80R13 support wheel, unbraked steering axle STEELPRESS, KNOTT or AL-KO,
- electrical installation 12V (in accordance with traffic regulations)
- 7 pins plug or 13 pins plug
- 6 belt attachment holders

This offer is solemnly for information. Considering constant development of our company the producer keeps the right to changes and technical modifications.

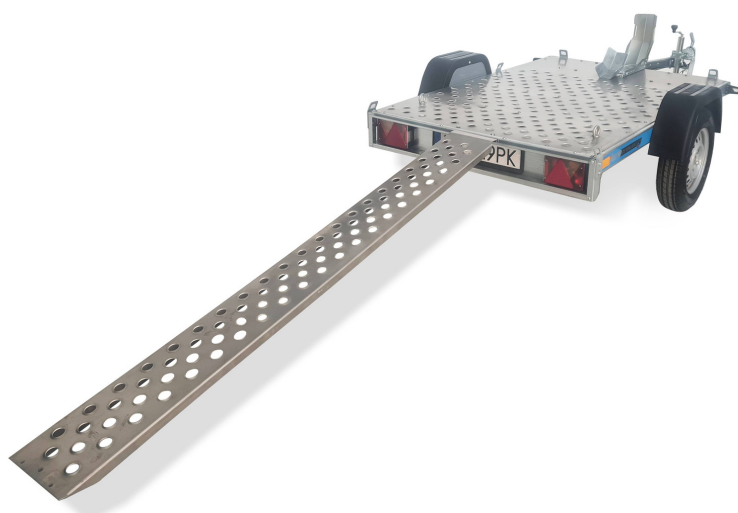
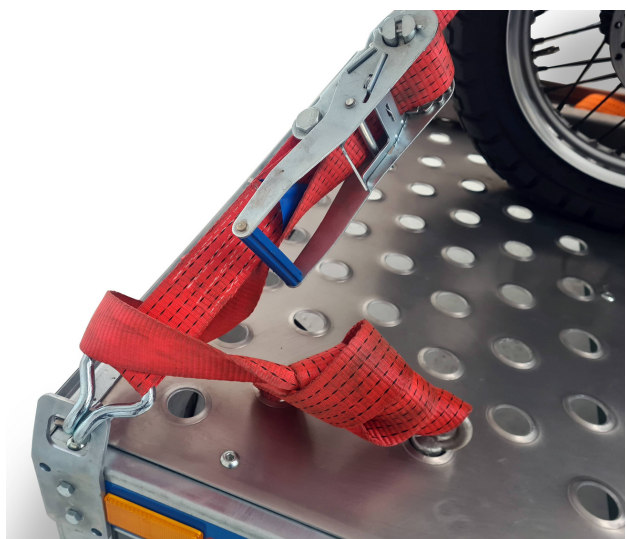
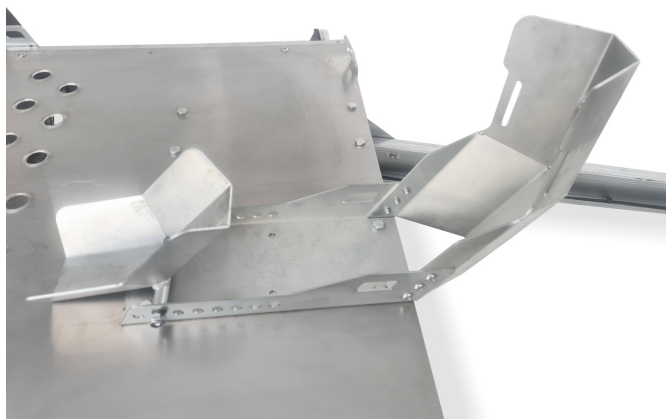
CODE	TYPE	Dimensions of cargo space (cm)	Capacity min. - max. (kg)	External dimensions of the trailer (cm)
10100000MQ	AMICUS	205x125	230-580	345-168
10501000MQ	AMICUS	205X140	250-600	385-183

## ACCESSORIES

Ramp 220x20cm, load capacity 350kg

Floor handles

Front wheel mounting



MULTI-OFFER SP. Z O. O.

ul. frezerów 9  
20-209 Lublin

e-mail: [bok@przyczepyfaro.pl](mailto:bok@przyczepyfaro.pl)

Web-site: [www.przyczepyfaro.pl](http://www.przyczepyfaro.pl)



# COMMERCIAL MATERIALS



Hoodie Blue



T-shirt Blue



Winter Hat



Cup



Pen



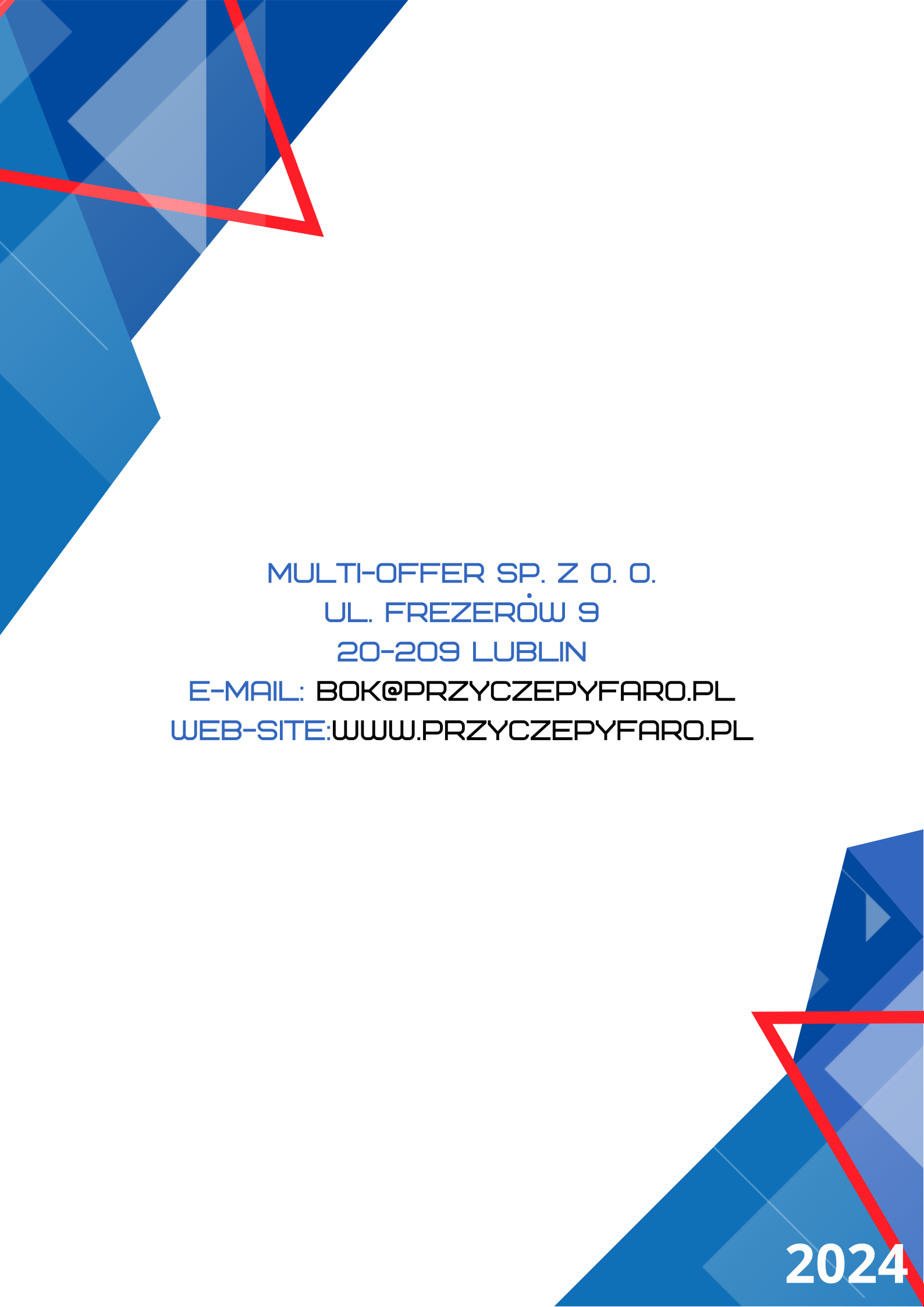
Baseball cap



Banner for fence 335x175 cm (POL or ENG)



Flag 150x300 cm (POL or ENG)



MULTI-OFFER SP. Z O. O.  
UL. FREZERÓW 9  
20-209 LUBLIN  
E-MAIL: [BOK@PRZYCZEPYFARO.PL](mailto:BOK@PRZYCZEPYFARO.PL)  
WEB-SITE: [WWW.PRZYCZEPYFARO.PL](http://WWW.PRZYCZEPYFARO.PL)

2024